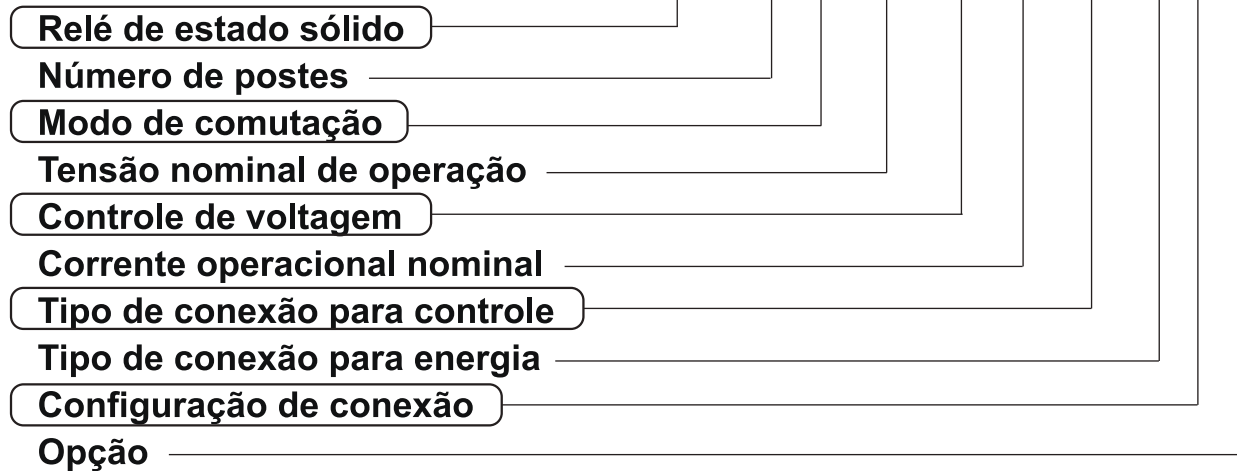
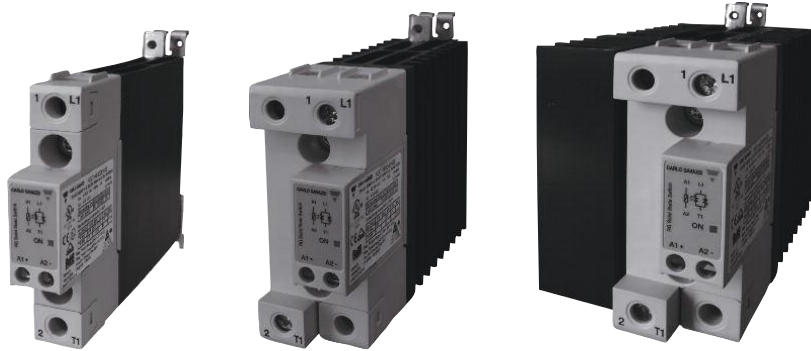


**Série RGC**

■ **Chave de Código**

**RGC 1 A 60 A 30 K K E \_**





**Série RGC**

## Guia de Seleção

| Tensão nominal,<br>Tensão de bloqueio,<br>Modo de comutação | Controle de Voltagem    | Conexão<br>Controle/Energia | Corrente Operacional Nominal @ 40°C (valor I <sup>2</sup> t)<br>Largura do Produto |  |  |   |
|---|-------------------------|-----------------------------|--|--|--|---|
|   |                         |                             | 20 AAC (525A <sup>2</sup> s)<br>17.5mm, low depth                                  | 23 AAC (525A <sup>2</sup> s)<br>17.5mm | 25 AAC (1800A <sup>2</sup> s)<br>17.5mm, low depth | 30 AAC (1800A <sup>2</sup> s)<br>22.5mm |
| 230V, 800Vp<br>ZC   | 3-32VDC                 | Screw/Screw<br>Spring/Screw | RGC1A23D15KKE  | RGC1A23D20KKE                          | RGC1A23D25KKE                                      | RGC1A23D30KKE                           |
|   |                         |                             | RGC1A23D15MKE  | RGC1A23D20MKE                          | RGC1A23D25MKE                                      | RGC1A23D30MKE                           |
|   | 20-275VAC, 24-190VDC    | Screw/Screw<br>Spring/Screw | RGC1A23A15KKE  | RGC1A23A20KKE                          | RGC1A23A25KKE                                      | RGC1A23A30KKE                           |
|   |                         |                             | RGC1A23A15MKE  | RGC1A23A20MKE                          | RGC1A23A25MKE                                      | RGC1A23A30MKE                           |
|   | 3-32VDC                 | Screw/Box<br>Spring/Box     | 40 AAC (3200A <sup>2</sup> s)<br>35mm  | 43 AAC (18000A <sup>2</sup> s)<br>35mm | 60 AAC (3200A <sup>2</sup> s)<br>70mm              | 65 AAC (18000A <sup>2</sup> s)<br>70mm  |
|   |                         |                             | RGC1A23D40KGE  | RGC1A23D42KGE                          | RGC1A23D60KGE                                      | RGC1A23D62KGE                           |
| 20-275VAC, 24-190VDC  | Screw/Box<br>Spring/Box | RGC1A23A40KGE               | RGC1A23A42KGE  | RGC1A23A60KGE                          | RGC1A23A62KGE                                      |   |
|   |                         | RGC1A23A40MGE               | RGC1A23A42MGE  | -                                      | RGC1A23A62MGE                                      |   |
| 600V, 1200Vp<br>ZC  | 4-32VDC                 | Screw/Screw<br>Spring/Screw | 20 AAC (525A <sup>2</sup> s)<br>17.5mm, low depth                                  | 23 AAC (525A <sup>2</sup> s)<br>17.5mm | 25 AAC (1800A <sup>2</sup> s)<br>17.5mm, low depth | 30 AAC (1800A <sup>2</sup> s)<br>22.5mm |
|   |                         |                             | RGC1A60D15KKE  | RGC1A60D20KKE                          | RGC1A60D25KKE                                      | RGC1A60D30KKE                           |
|   | 20-275VAC, 24-190VDC    | Screw/Screw<br>Spring/Screw | RGC1A60D15MKE  | RGC1A60D20MKE                          | RGC1A60D25MKE                                      | RGC1A60D30MKE                           |
|   |                         |                             | RGC1A60A15KKE  | RGC1A60A20KKE                          | RGC1A60A25KKE                                      | RGC1A60A30KKE                           |
|   | 4-32VDC                 | Screw/Box<br>Spring/Box     | 40 AAC (3200A <sup>2</sup> s)<br>35mm  | 43 AAC (18000A <sup>2</sup> s)<br>35mm | 60 AAC (3200A <sup>2</sup> s)<br>70mm              | 65 AAC (18000A <sup>2</sup> s)<br>70mm  |
|   |                         |                             | RGC1A60D40KGE  | RGC1A60D42KGE                          | RGC1A60D60KGE                                      | RGC1A60D62KGE                           |
| 20-275VAC, 24-190VDC  | Screw/Box<br>Spring/Box | RGC1A60A40KGE               | RGC1A60A42KGE  | RGC1A60A60KGE                          | RGC1A60A62KGE                                      |   |
|   |                         | RGC1A60A40MGE               | RGC1A60A42MGE  | -                                      | RGC1A60A62MGE                                      |   |
| 600V, 1200Vp<br>IO  | 4-32VDC                 | Screw/Screw                 | 20 AAC (525A <sup>2</sup> s)<br>17.5mm, low depth                                  | 23 AAC (525A <sup>2</sup> s)<br>17.5mm | 25 AAC (1800A <sup>2</sup> s)<br>17.5mm, low depth | 30 AAC (1800A <sup>2</sup> s)<br>22.5mm |
|   |                         |                             | RGC1B60D15KKE  | RGC1B60D20KKE                          | RGC1B60D25KKE                                      | RGC1B60D30KKE                           |
|   | 4-32VDC                 | Screw/Box                   | 40 AAC (3200A <sup>2</sup> s)<br>35mm  | 43 AAC (18000A <sup>2</sup> s)<br>35mm | 60 AAC (3200A <sup>2</sup> s)<br>70mm              | 65 AAC (18000A <sup>2</sup> s)<br>70mm  |
|   |                         |                             | RGC1B60D40KGE  | RGC1B60D42KGE                          | RGC1B60D60KGE                                      | RGC1B60D62KGE                           |