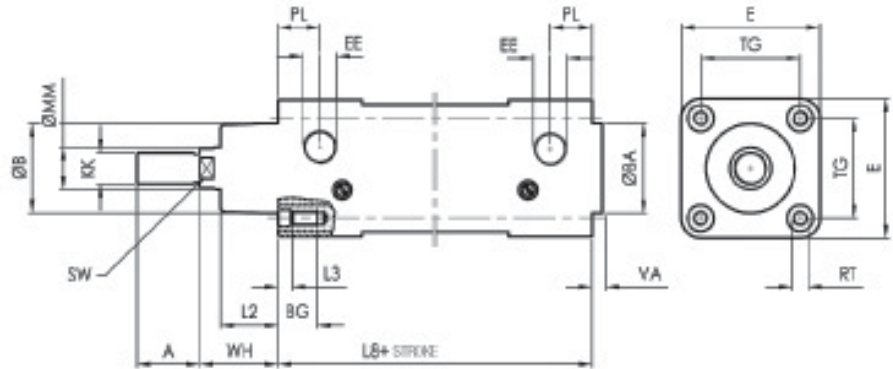
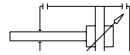


EH T

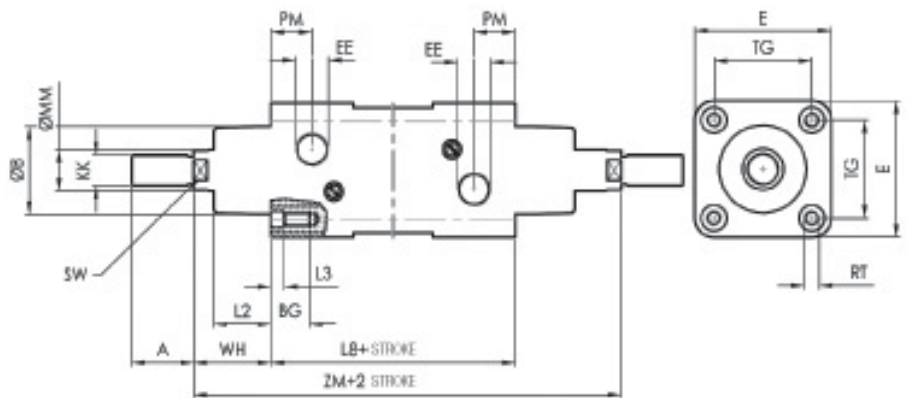
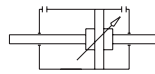
DUPLA AÇÃO MAGNÉTICO COM AMORTECIMENTO



Ø	Ø B d11	VA	L2	WH	Ø MM	SW	KK	A	L8	BG	RT	E	TG	EE	PL	L3	ZM
32	30	4	20	26	12	10	M10X1.25	22	94	16	M6	47	32.5	G1/8	14	5	146
40	35	4	22	30	16	13	M12X1.25	24	105	16	M6	53	38	G1/4	16	5	165
50	40	4	28	37	20	17	M16X1.5	32	106	16	M8	65	46.5	G1/4	21	5	180
63	45	4	28	37	20	17	M16X1.5	32	121	16	M8	75	56.5	G3/8	22	5	195
80	45	4	34	46	25	22	M20X1.5	40	128	18	M10	95	72	G3/8	23	6	220
100	55	4	38	51.5	25	22	M20X1.5	40	138	18	M10	115	89	G1/2	26	6	240
125	60	5	50	65	32	27	M27X2	54	160	19	M12	140	110	G1/2	30	6	290
160	65	6	55	80	40	36	M36X2	72	180	24	M16	180	140	G3/4	29	0	340
200	75	6	60	95	40	36	M36X2	72	180	24	M16	220	175	G3/4	29	0	370
250	90	10	75	105	50	46	M42X2	84	200	25	M20	275	220	G1"	31	0	410
320	110	10	90	120	63	55	M48X2	96	220	28	M24	350	270	G1"	31	0	460

EL T

DUPLA AÇÃO HASTE PASSANTE MAGNÉTICO COM AMORTECIMENTO



Ø	Ø B d11	VA	L2	WH	Ø MM	SW	KK	A	L8	BG	RT	E	TG	EE	PM	L3	ZM
32	30	4	20	26	12	10	M10X1.25	22	94	16	M6	47	32.5	G1/8	14	5	146
40	35	4	22	30	16	13	M12X1.25	24	105	16	M6	53	38	G1/4	16	5	165
50	40	4	28	37	20	17	M16X1.5	32	106	16	M8	65	46.5	G1/4	21	5	180
63	45	4	28	37	20	17	M16X1.5	32	121	16	M8	75	56.5	G3/8	22	5	195
80	45	4	34	46	25	22	M20X1.5	40	128	18	M10	95	72	G3/8	23	6	220
100	55	4	38	51.5	25	22	M20X1.5	40	138	18	M10	115	89	G1/2	26	6	240
125	60	5	50	65	32	27	M27X2	54	160	19	M12	140	110	G1/2	30	6	290
160	65	6	55	80	40	36	M36X2	72	180	24	M16	180	140	G3/4	29	0	340
200	75	6	60	95	40	36	M36X2	72	180	24	M16	220	175	G3/4	29	0	370
250	90	10	75	105	50	46	M42X2	84	200	25	M20	275	220	G1"	31	0	410
320	110	10	90	120	63	55	M48X2	96	220	28	M24	350	270	G1"	31	0	460